

# Single Orifice Float Trap

## SOFT 58

### Description

SOFT58 is High Pressure Float type steam Trap. It has Carbon steel cover & base with Stainless steel internal mechanism. Float mechanism is robust & water hammer resistant. This trap is provided with fixed bleed type vent to release air & locked steam. SOFT58 is provided with support legs for floor mounting & has horizontal flanged pipe end connections. This trap is easily accessible for maintenance purpose. SOFT58 is particularly suitable for condensate removal from high-pressure process applications.

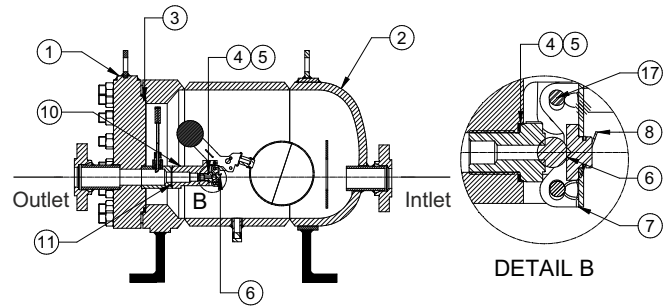
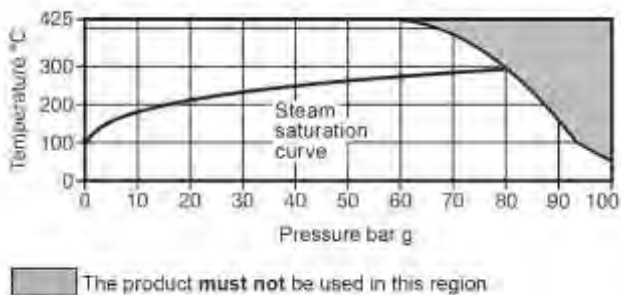
### Sizes and Pipe Connection

- DN40 (1 1/2"), DN50 (2"), Flanged Class 600

### Limiting Conditions

PMA - Maximum allowable pressure	102 barg @ 38°C		
TMA - Maximum allowable temperature	425°C @ 57.5 barg		
Minimum allowable temperature	0°C		
PMO - Maximum operating pressure	80 bar g @ 296°C		
TMO - Maximum operating temperature	425°C @ 57.5 barg		
Minimum operating temperature	0 °C		
Δ PMX	Maximum	SOFT58-35	35 bar g
	differential	SOFT58-65	65 bar g
	Pressure	SOFT58-80	80 bar g
Maximum cold hydraulic test pressure 153 bar g			

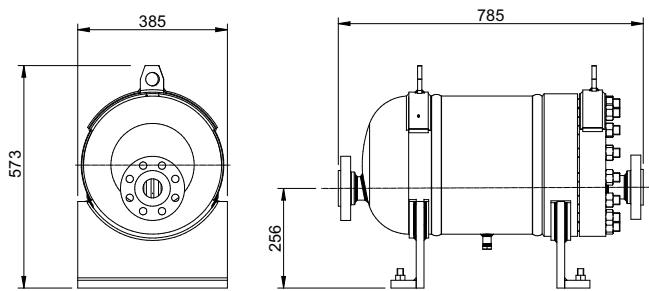
### Operating Range



### Material

No.	Part	Material
1	Base	Carbon Steel - ASTM A105N
2	Cover	Carbon Steel - ASTM A105N
3	Cover Gasket	Spiral Wound SS and Graphite
4	Valve Seat	Titanium
5	Valve Seat Gasket	Stainless Steel
6	Valve Head	Stainless Steel
7	Valve Head bracket	Stainless Steel
8	Retaining clip	Stainless Steel
9	Mechanism Mounting Block	Stainless Steel
10	Mechanism Bracket	Stainless Steel
11	Mechanism Gasket	Corrugated Steel, Graphite
12	Float Assembly	Stainless Steel
13	Float Lever	Stainless Steel
14	Mechanism Bracket Bolt	Stainless Steel
15	Conter Weight	Stainless Steel
16	Conter Weight Bolt	Stainless Steel
17	Pivot Pin	Stainless Steel
18	Cover Stud	ASTM A193 B16
19	Cover Nut	ASTM A 194 Gr.4
20	Fixed Bleed Assembly	Stainless Steel
21	Flow deflector	Stainless Steel
22	Plain washar	Stainless Steel
23	Push Pull lever	Stainless Steel
24	Split pin	Stainless Steel

### Dimensions and Weights (approximate)



Weight ~ 200 kg

### Available Spares::

Mechanism maintenance kit	4-17, 22,23,24
Valves eat and Valve head maintenance kit	4-8
Cover gasket	3
Bleed assembly for AIR VENT maintenance kit	20
Gasket	3,5,11

### How to Order:

Example: 1 No. Forbes Marshall 40NB SOFT58-35 High Pressure Float type steam trap with flanged to class 600

### How to Order Spares:

Use the description of spares given in 'Available spares' and describe the size and type of trap along with pressure range of trap.

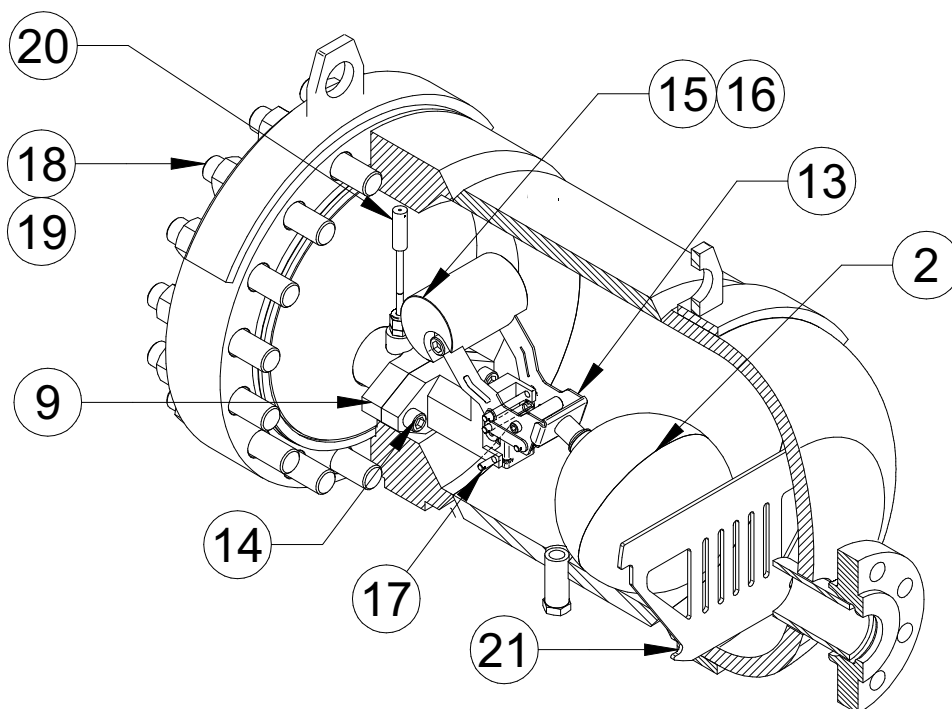
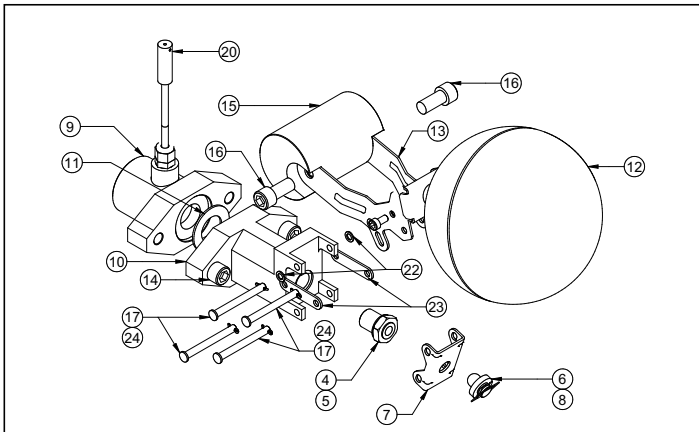
Example: Seat and valve head set for a Forbes Marshall 40NB SOFT58-35 float type steam trap.

### Safety information, installation and maintenance:

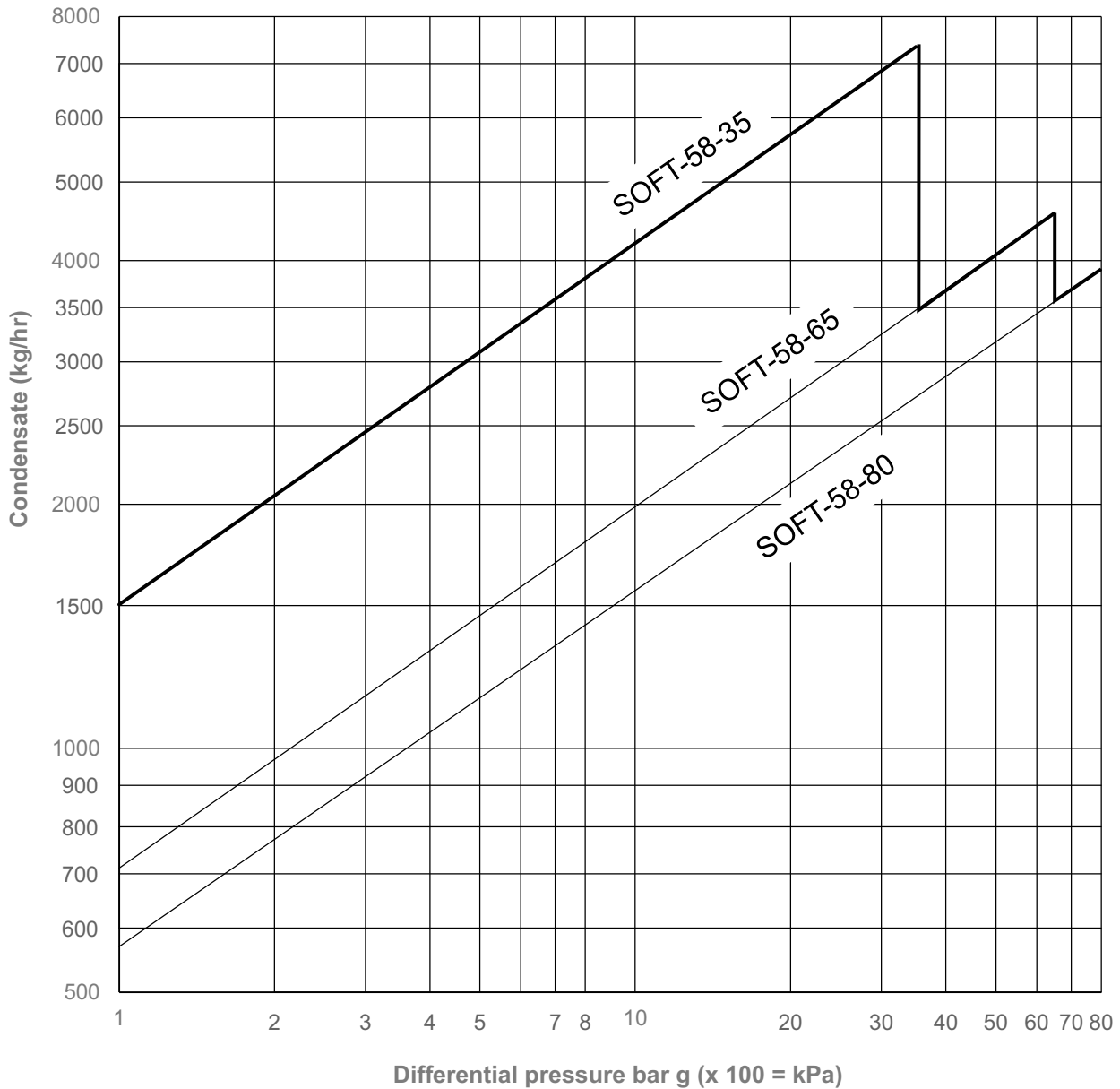
Complete product information is available in Product User Manual supplied with the product. The SOFT58 must be installed in line with the flow direction as shown by arrow on the nameplate, and with the float arm in a horizontal plane so that it moves vertically up & down. Product is provided with support legs. Please note that appropriate high temperature jointing compound must be used on threads during installation.

### Recommended Tightening Torques:

Item No.	Part	Fastener	Torque
4	Stud nut	M 24	500 N-m
6	Valve seat	M 20	90 N-m



**Discharge Capacities Chart:**



www.forbesmarshall.com

Forbes Marshall Arca

Codel International

Krohne Marshall

Forbes Vyncke

Forbes Marshall Steam Systems

**A: Forbes Marshall Pvt. Ltd.**  
Opp. 106th Milestone, CTS 2220,  
Mumbai-Pune Road, Kasarwadi,  
Pune MH 411034 INDIA

**P:** +91(0)20-68138555

**F:** +91(0)20-68138402

**E:** ccmidc@forbesmarshall.com

© All rights reserved. Any reproduction or distribution in part or as a whole without written permission of Forbes Marshall Pvt Ltd, its associate companies or its subsidiaries ("FM Group") is prohibited. Information, designs or specifications in this document are subject to change without notice. Responsibility for suitability, selection, installation, use, operation or maintenance of the product(s) rests solely with the purchaser and/or user. The contents of this document are presented for informational purposes only. FM Group disclaims liabilities or losses that may be incurred as a consequence of the use of this information.

**Forbes Marshall International Pte. Ltd.**  
16A, Tuas Avenue 1,  
#05-21, JTC Space @Tuas  
Singapore - 639533

**P:** +65 6219 3890

**CIN No:** U28996PN1985PTC037806