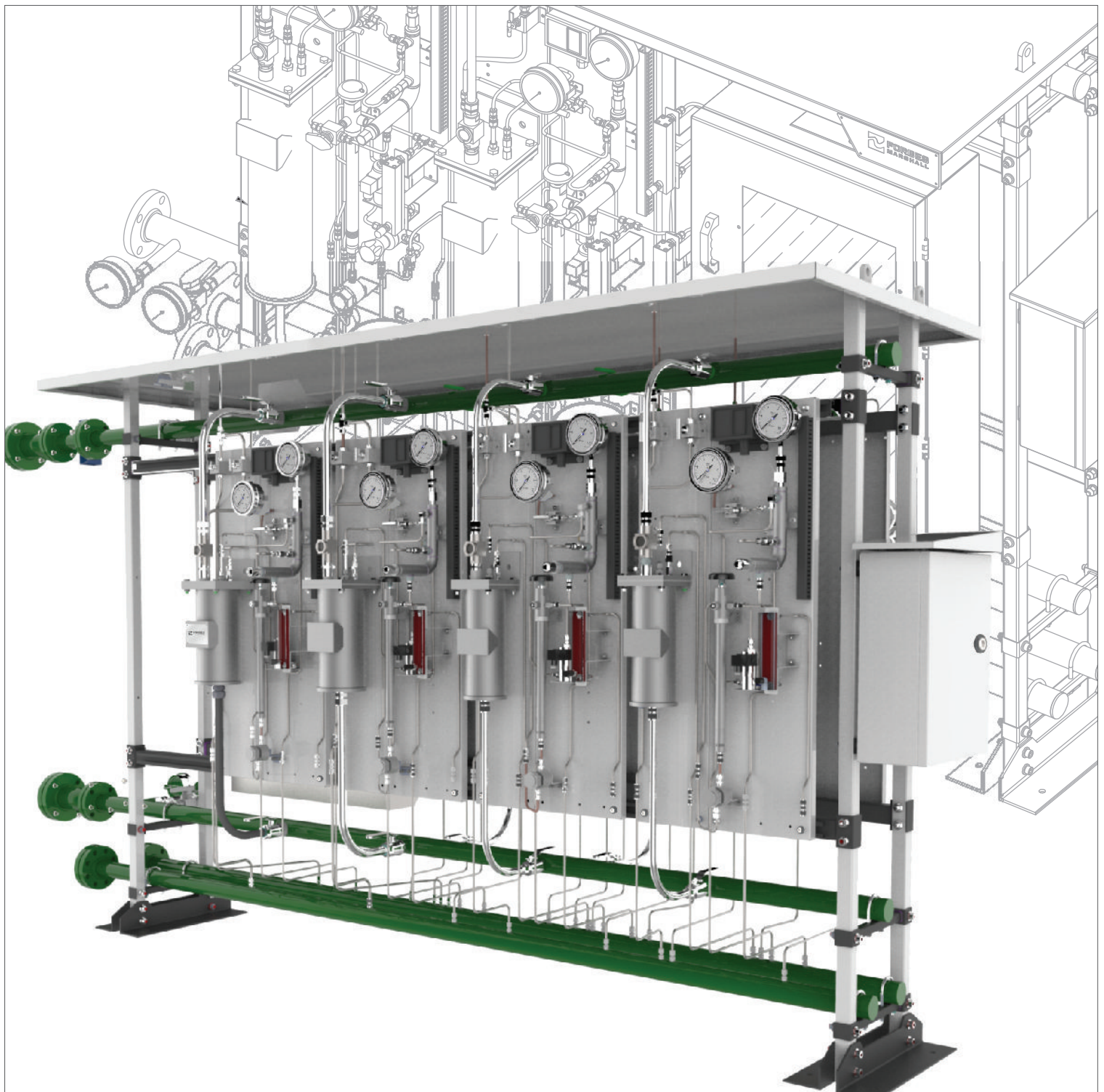


QSWAS™

Compact. Easy to Install, Operate and Maintain



QSWAS™

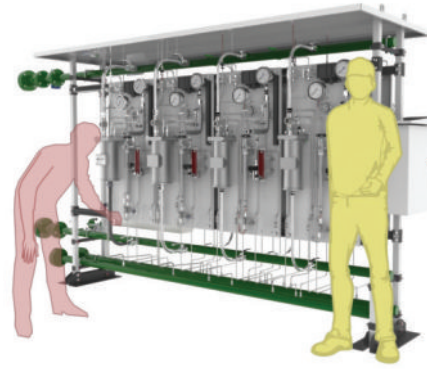


In power plants, high pressure boilers and steam turbines are under constant attack from erosive and corrosive elements such as silica, sodium, dissolved oxygen, calcium, chloride and phosphates.

Forbes Marshall is India's largest SWAS manufacturer with over 700 installation in India and worldwide. Our strong research and development has enabled us to constantly innovate the SWAS to suit customer requirements and needs.

QSWAS™ is a compact pre-assembled modular, flexible and easy to use system, that enables maximum utilisation of installation space along with an ease of operation. It gives the user complete flexibility in design layout, customisation and expansion of the SWAS panel to suit his ever changing requirements.

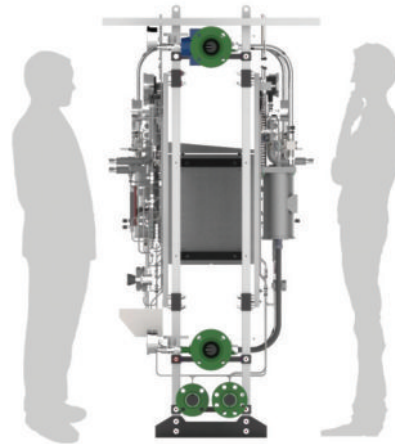
Quick Installation and Maintenance



Standard modular design helps cut lead time for fabricated panels and also integrates complete functionality.

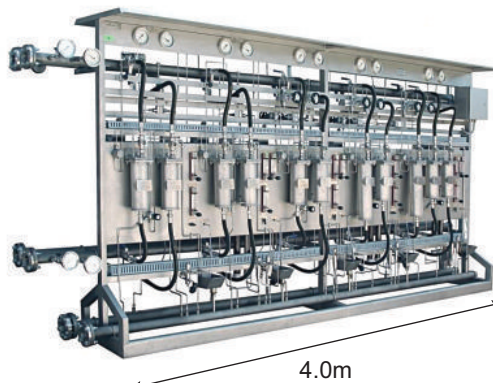
Modular design helps the operator maintain components on the spot.

Maximum Access

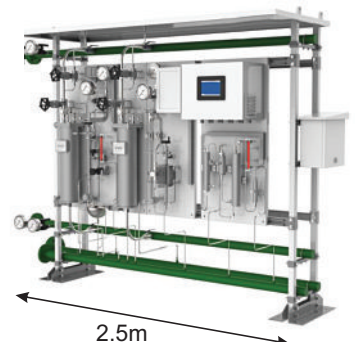


All components of QSWAS™ are easily accessible from both sides of the SWAS Panel

Smaller Footprint

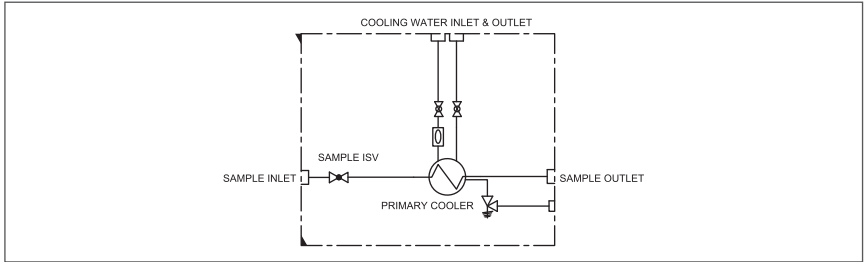


Traditional 6 Line sampling panel - with front access



6 Line QSWAS™ - with front and back access

Primary Cooler Module

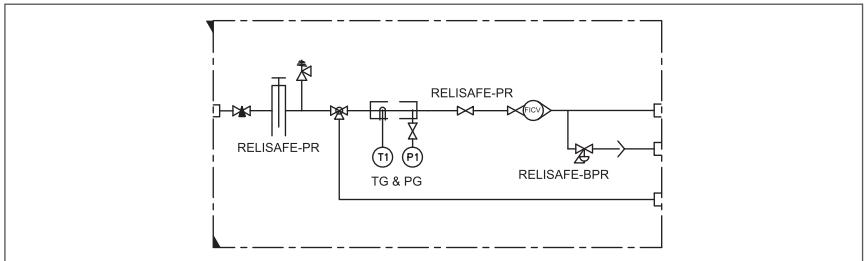


Safety Features

Inlet globe valve - designed for super critical pressure and temperature of steam

Sample cooler - designed with inbuilt safety relief valve and drain plug. The coil is designed and certified for high pressure and temperature.

Conditioning Module



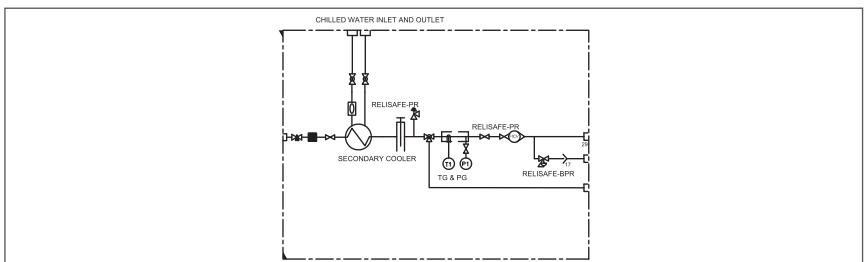
Safety Features

Relisafe™- PR sample pressure reducing valve. Designed as per ASME PTC 19.11-2008 with inbuilt pressure relief valve

Relisafe™-TP high temperature safety shutoff valve with manual reset as per ASME PTC 19.11-2008 for instrument and operator safety

Temperature and pressure gauges for indication and adjustments

Secondary Cooler + Conditioning Module



Safety Features

Secondary Sample cooler - designed with inbuilt safety relief valve and drain plug. Cooler designed for precise cooling.

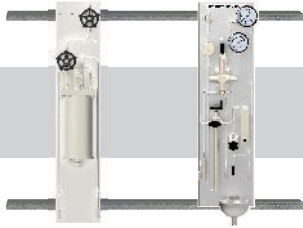
Relisafe™- PR sample pressure reducing valve. Designed as per ASME PTC 19.11-2008 with inbuilt pressure relief valve

Relisafe™-TP high temperature safety shutoff valve with manual reset as per ASME PTC 19.11-2008 for instrument and operator safety

Temperature and pressure gauges for indication and adjustments

QSWAS™ Configuration

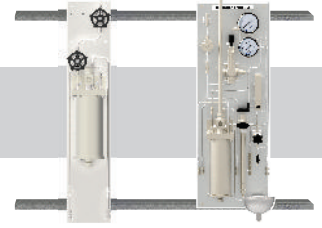
Single Stage Cooling



Primary Cooler Module

Conditioning Module

Two Stage Cooling



Primary Cooler Module

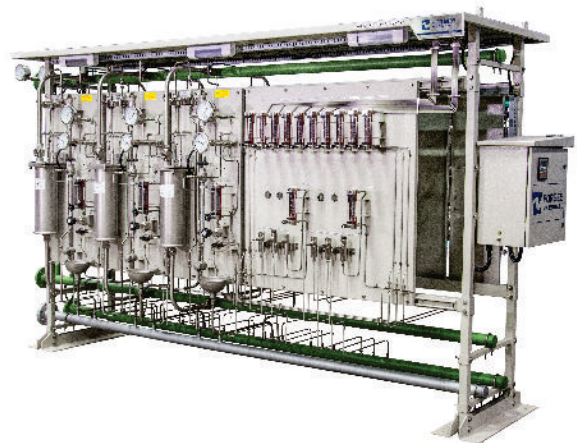
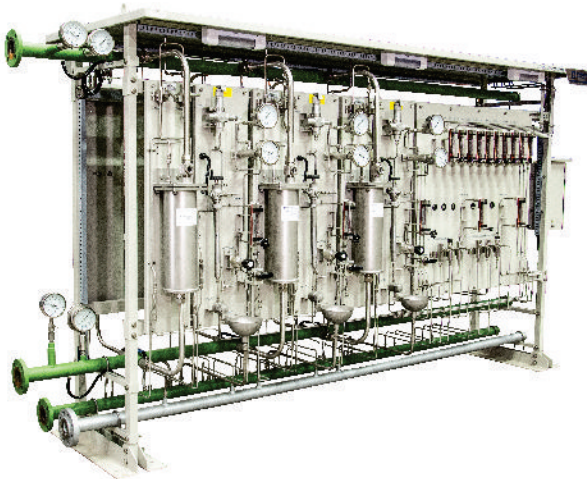
Secondary Cooler + Conditioning Module

Easy to Maintain
All components accessible from front for maintenance

Wall Mounted Option



Rack Mounted Option



Forbes Marshall
Krohne Marshall
Forbes Marshall Arca
Codel International
Forbes Solar
Forbes Vyncke
Forbes Marshall Steam Systems

Opp 106th Milestone
Bombay Poona Road
Kasarwadi, Pune - 411 034. INDIA
Tel : 91(0)20-27145595, 39858555
Fax : 91(0)20-27147413

Email : swasmktg@forbesmarshall.com, ccmidc@forbesmarshall.com

© All rights reserved. Any reproduction or distribution in part or as a whole without written permission of Forbes Marshall Pvt Ltd, its associate companies or its subsidiaries ("FM Group") is prohibited.
Information, designs or specifications in this document are subject to change without notice. Responsibility for suitability, selection, installation, use, operation or maintenance of the product(s) rests solely with the purchaser and/or user. The contents of this document are presented for informational purposes only. FM Group disclaims liabilities or losses that may be incurred as a consequence of the use of this information.

B-85, Phase II, Chakan Indl Area
Sawardari, Chakan, Tal. Khed
Dist. Pune - 410 501. INDIA
Tel : 91(0)2135-393400

A-34/35, MIDC H Block
Pimpri, Pune - 411 018. INDIA.
Tel : 91(0)20-27442020, 39851199
Fax : 91(0)20-27442040

CIN No.: U28996PN1985PTC037806
www.forbesmarshall.com